



**COMMONWEALTH OF KENTUCKY
TRANSPORTATION CABINET**

Frankfort, Kentucky 40622
www.transportation.ky.gov/

Matthew G. Bevin
Governor

Greg Thomas
Secretary

June 20, 2018

CALL NO. 203
CONTRACT ID NO. 181219
ADDENDUM # 1

Subject: KNOX-LAUREL COUNTIES, 121GR18D019-NHPP
Letting June 22, 2018

- (1) Revised - Material Summary - Pages 160-166 of 210
- (2) Revised - Proposal Bid Items - Pages 205-210 of 210
- (3) Revised - Plan Sheets - U1 and U7

Proposal revisions are available at <http://transportation.ky.gov/Construction-Procurement/>.

If you have any questions, please contact us at 502-564-3500.

Sincerely,

A handwritten signature in black ink that reads "Rachel Mills".

Rachel Mills, P.E.
Director
Division of Construction Procurement

RM:mr
Enclosures



An Equal Opportunity Employer M/F/D

MATERIAL SUMMARY

CONTRACT ID: 181219

121GR18D019-NHPP

DE06100251819

CUMBERLAND GAP PARKWAY (US 25E) IN KNOX COUNTY MAJOR WIDENING - ADDRESS SAFETY CAPACITY ON US 25E FROM CORBIN BYPASS TO KNOX/LAUREL COUNTY LINE. IMPROVE SAFETY ALONG CORRIDOR BY PROVIDING IMPROVED ACCESS MANAGEMENT ASPHALT SURFACE WITH GRADE & DRAIN, A DISTANCE

Project Line No	Bid Code	DESCRIPTION	Quantity	Unit
0005	00003	CRUSHED STONE BASE	38,727.00	TON
0010	00020	TRAFFIC BOUND BASE	700.00	TON
0015	00100	ASPHALT SEAL AGGREGATE	266.00	TON
0020	00103	ASPHALT SEAL COAT	33.00	TON
0025	00190	LEVELING & WEDGING PG64-22	6,315.00	TON
0030	00214	CL3 ASPH BASE 1.00D PG64-22	12,496.00	TON
0035	00216	CL3 ASPH BASE 1.00D PG76-22	21,776.00	TON
0040	00336	CL3 ASPH SURF 0.38A PG76-22	6,561.00	TON
0045	00339	CL3 ASPH SURF 0.38D PG64-22	3,644.00	TON
0050	00356	ASPHALT MATERIAL FOR TACK	112.90	TON
0055	20071EC	JOINT ADHESIVE	41,420.00	LF
0060	24904EC	CL3 ASPH BASE CK PG64-22	6,463.00	TON
0065	00078	CRUSHED AGGREGATE SIZE NO 2	8,966.00	TON
0070	01810	STANDARD CURB AND GUTTER	3,459.00	LF
0075	01875	STANDARD HEADER CURB	1,085.00	LF
0080	01904	REMOVE CURB	5.00	LF
0085	01949	MOUNTABLE MEDIAN TYPE 6A	1,629.00	SQYD
0090	01982	DELINEATOR FOR GUARDRAIL MONO DIRECTIONAL WHITE	95.00	EACH
0095	01987	DELINEATOR FOR GUARDRAIL BI DIRECTIONAL WHITE	47.00	EACH
0100	02014	BARRICADE-TYPE III	7.00	EACH
0105	02091	REMOVE PAVEMENT	761.00	SQYD
0110	02101	CEM CONC ENT PAVEMENT-8 IN	578.00	SQYD
0115	02159	TEMP DITCH	5,178.00	LF
0120	02160	CLEAN TEMP DITCH	2,589.00	LF
0125	02200	ROADWAY EXCAVATION	4,483.00	CUYD
0130	02223	GRANULAR EMBANKMENT	404.00	CUYD
0135	02230	EMBANKMENT IN PLACE	63,831.00	CUYD
0140	02242	WATER - (FOR DUST CONTROL)	130.00	MGAL
0145	02351	GUARDRAIL-STEEL W BEAM-S FACE	9,654.50	LF
0150	02360	GUARDRAIL TERMINAL SECTION NO 1	20.00	EACH
0155	02367	GUARDRAIL END TREATMENT TYPE 1	6.00	EACH
0160	02369	GUARDRAIL END TREATMENT TYPE 2A	4.00	EACH
0165	02371	GUARDRAIL END TREATMENT TYPE 7	2.00	EACH
0170	02381	REMOVE GUARDRAIL	6,075.00	LF
0175	02391	GUARDRAIL END TREATMENT TYPE 4A	3.00	EACH
0180	02429	RIGHT-OF-WAY MONUMENT TYPE 1	73.00	EACH
0185	02430	RIGHT-OF-WAY MONUMENT TYPE 1A	15.00	EACH
0190	02432	WITNESS POST	2.00	EACH
0195	02483	CHANNEL LINING CLASS II	1,477.00	TON
0200	02484	CHANNEL LINING CLASS III	816.00	TON
0205	02545	CLEARING AND GRUBBING - (APPROXIMATELY 93 ACRES; KNOX COUNTY)	1.00	LS
0210	02555	CONCRETE-CLASS B	216.16	CUYD

MATERIAL SUMMARY

Project Line No	Bid Code	DESCRIPTION	Quantity	Unit
0215	02562	TEMPORARY SIGNS	295.00	SQFT
0220	02585	EDGE KEY	249.00	LF
0225	02596	FABRIC-GEOTEXTILE TYPE I	2,925.00	SQYD
0230	02599	FABRIC-GEOTEXTILE TYPE IV	7,916.00	SQYD
0235	02611	HANDRAIL-TYPE A-1	388.00	LF
0240	02650	MAINTAIN & CONTROL TRAFFIC - (KNOX COUNTY)	1.00	LS
0245	02671	PORTABLE CHANGEABLE MESSAGE SIGN	1.00	EACH
0250	02676	MOBILIZATION FOR MILL & TEXT - (KNOX COUNTY)	1.00	LS
0255	02677	ASPHALT PAVE MILLING & TEXTURING	66.00	TON
0260	02690	SAFELOADING	24.40	CUYD
0265	02701	TEMP SILT FENCE	5,178.00	LF
0270	02703	SILT TRAP TYPE A	95.00	EACH
0275	02704	SILT TRAP TYPE B	95.00	EACH
0280	02705	SILT TRAP TYPE C	95.00	EACH
0285	02706	CLEAN SILT TRAP TYPE A	95.00	EACH
0290	02707	CLEAN SILT TRAP TYPE B	95.00	EACH
0295	02708	CLEAN SILT TRAP TYPE C	95.00	EACH
0300	02720	SIDEWALK-4 IN CONCRETE	387.00	SQYD
0305	02726	STAKING - (KNOX COUNTY)	1.00	LS
0310	02731	REMOVE STRUCTURE - (62-LF 5' X 4' RCBC; KNOX COUNTY)	1.00	LS
0315	05950	EROSION CONTROL BLANKET	21,812.00	SQYD
0320	05952	TEMP MULCH	229,900.00	SQYD
0325	05953	TEMP SEEDING AND PROTECTION	308,066.00	SQYD
0330	05963	INITIAL FERTILIZER	2.90	TON
0335	05964	20-10-10 FERTILIZER	4.84	TON
0340	05985	SEEDING AND PROTECTION	95,226.00	SQYD
0345	05990	SODDING	1,236.00	SQYD
0350	05992	AGRICULTURAL LIMESTONE	58.00	TON
0355	05997	TOPSOIL FURNISHED AND PLACED	2,367.00	CUYD
0360	06510	PAVE STRIPING-TEMP PAINT-4 IN	41,420.00	LF
0365	06514	PAVE STRIPING-PERM PAINT-4 IN	78,300.00	LF
0370	06566	PAVE MARKING-THERMO X-WALK-12 IN	650.00	LF
0375	06568	PAVE MARKING-THERMO STOP BAR-24IN	750.00	LF
0380	06570	PAVE MARKING-PAINT CROSS-HATCH	625.00	SQFT
0385	06573	PAVE MARKING-THERMO STR ARROW	4.00	EACH
0390	06574	PAVE MARKING-THERMO CURV ARROW	112.00	EACH
0395	06575	PAVE MARKING-THERMO COMB ARROW	5.00	EACH
0400	06600	REMOVE PAVEMENT MARKER TYPE V	8.00	EACH
0405	08001	STRUCTURE EXCAVATION-COMMON	263.00	CUYD
0410	10020NS	FUEL ADJUSTMENT	113,648.00	DOLL
0415	10030NS	ASPHALT ADJUSTMENT	223,844.00	DOLL
0420	20191ED	OBJECT MARKER TY 3	6.00	EACH
0425	20362ES403	SHOULDER RUMBLE STRIPS-SAWED	41,418.00	LF
0430	20550ND	SAWCUT PAVEMENT	759.00	LF
0435	21289ED	LONGITUDINAL EDGE KEY	11,208.00	LF
0440	22861EN	HIGH STRENGTH GEOTEXTILE FABRIC TY V	7,916.00	SQYD
0445	23274EN11F	TURF REINFORCEMENT MAT 1	1,847.00	SQYD
0450	24889EC	PAVE MARKING-THERMO U-TURN	13.00	EACH
0455	00078	CRUSHED AGGREGATE SIZE NO 2	6.00	TON

MATERIAL SUMMARY

Project Line No	Bid Code	DESCRIPTION	Quantity	Unit
0460	00440	ENTRANCE PIPE-15 IN	605.00	LF
0465	00441	ENTRANCE PIPE-18 IN	241.00	LF
0470	00443	ENTRANCE PIPE-24 IN	135.00	LF
0475	00461	CULVERT PIPE-15 IN	15.00	LF
0480	00462	CULVERT PIPE-18 IN	521.00	LF
0485	00464	CULVERT PIPE-24 IN	353.00	LF
0490	00466	CULVERT PIPE-30 IN	75.00	LF
0495	00468	CULVERT PIPE-36 IN	20.00	LF
0500	00472	CULVERT PIPE-60 IN	120.00	LF
0505	00521	STORM SEWER PIPE-15 IN	1,293.00	LF
0510	00522	STORM SEWER PIPE-18 IN	2,187.00	LF
0515	00524	STORM SEWER PIPE-24 IN	583.00	LF
0520	00526	STORM SEWER PIPE-30 IN	92.00	LF
0525	00528	STORM SEWER PIPE-36 IN	519.00	LF
0530	01000	PERFORATED PIPE-4 IN	2,035.00	LF
0535	01010	NON-PERFORATED PIPE-4 IN	180.00	LF
0540	01015	INSPECT & CERTIFY EDGE DRAIN SYSTEM - (KNOX COUNTY)	1.00	LS
0545	01024	PERF PIPE HEADWALL TY 2-4 IN	1.00	EACH
0550	01028	PERF PIPE HEADWALL TY 3-4 IN	5.00	EACH
0555	01202	PIPE CULVERT HEADWALL-15 IN	1.00	EACH
0560	01204	PIPE CULVERT HEADWALL-18 IN	10.00	EACH
0565	01208	PIPE CULVERT HEADWALL-24 IN	8.00	EACH
0570	01210	PIPE CULVERT HEADWALL-30 IN	1.00	EACH
0575	01212	PIPE CULVERT HEADWALL-36 IN	3.00	EACH
0580	01220	PIPE CULVERT HEADWALL-60 IN	2.00	EACH
0585	01432	SLOPED BOX OUTLET TYPE 1-15 IN	4.00	EACH
0590	01433	SLOPED BOX OUTLET TYPE 1-18 IN	4.00	EACH
0595	01450	S & F BOX INLET-OUTLET-18 IN	7.00	EACH
0600	01451	S & F BOX INLET-OUTLET-24 IN	4.00	EACH
0605	01452	S & F BOX INLET-OUTLET-30 IN	3.00	EACH
0610	01456	CURB BOX INLET TYPE A	10.00	EACH
0615	01480	CURB BOX INLET TYPE B	1.00	EACH
0620	01490	DROP BOX INLET TYPE 1	3.00	EACH
0625	01505	DROP BOX INLET TYPE 5B	5.00	EACH
0630	01508	DROP BOX INLET TYPE 5C	2.00	EACH
0635	01511	DROP BOX INLET TYPE 5D	1.00	EACH
0640	01517	DROP BOX INLET TYPE 5F	10.00	EACH
0645	01544	DROP BOX INLET TYPE 11	10.00	EACH
0650	01559	DROP BOX INLET TYPE 13G	6.00	EACH
0655	01650	JUNCTION BOX	1.00	EACH
0660	01740	CORED HOLE DRAINAGE BOX CON-4 IN	12.00	EACH
0665	01761	MANHOLE TYPE B	1.00	EACH
0670	01767	MANHOLE TYPE C	2.00	EACH
0675	02010	ADJUST MEDIAN BOX	6.00	EACH
0680	02600	FABRIC GEOTEXTILE TY IV FOR PIPE	20,476.00	SQYD
0685	23952EC	DRAINAGE JUNCTION BOX TY B	1.00	EACH
0690	24814EC	PIPELINE INSPECTION	5,622.00	LF
0695	15000	S BYPASS PUMPING	34.00	EACH
0700	15017	S ENCASMENT STEEL BORED RANGE 4	465.00	LF

MATERIAL SUMMARY

Project Line No	Bid Code	DESCRIPTION	Quantity	Unit
0705	15023	S ENCASEMENT STEEL OPEN CUT RANGE 4	225.00	LF
0710	15059	S FORCE MAIN PVC 04 INCH	80.00	LF
0715	15061	S FORCE MAIN PVC 08 INCH	1,710.00	LF
0720	15069	S FORCE MAIN TAP SLEEVE/VALVE RNG 1	6.00	EACH
0725	15073	S FORCE MAIN TIE-IN 04 INCH	1.00	EACH
0730	15086	S LATERAL CLEANOUT	1.00	EACH
0735	15088	S LATERAL LONG SIDE 06 INCH	1.00	EACH
0740	15092	S MANHOLE	27.00	EACH
0745	15093	S MANHOLE ABANDON/REMOVE	12.00	EACH
0750	15095	S MANHOLE CASTING STANDARD	27.00	EACH
0755	15112	S PIPE PVC 08 INCH	3,435.00	LF
0760	04792	CONDUIT-1 IN	105.00	LF
0765	04795	CONDUIT-2 IN	90.00	LF
0770	04811	ELECTRICAL JUNCTION BOX TYPE B	23.00	EACH
0775	04820	TRENCHING AND BACKFILLING	1,430.00	LF
0780	04821	OPEN CUT ROADWAY	90.00	LF
0785	04830	LOOP WIRE	10,615.00	LF
0790	04844	CABLE-NO. 14/5C	5,175.00	LF
0795	04850	CABLE-NO. 14/1 PAIR	11,950.00	LF
0800	04885	MESSENGER-10800 LB	1,905.00	LF
0805	04895	LOOP SAW SLOT AND FILL	3,895.00	LF
0810	04931	INSTALL CONTROLLER TYPE 170	4.00	EACH
0815	04932	INSTALL STEEL STRAIN POLE	16.00	EACH
0820	24955ED	REMOVE SIGNAL EQUIPMENT	5.00	EACH
0825	20093NS835	INSTALL PEDESTRIAN HEAD-LED	2.00	EACH
0830	20094ES835	TEMP RELOCATION OF SIGNAL HEAD	37.00	EACH
0835	20188NS835	INSTALL LED SIGNAL-3 SECTION	22.00	EACH
0840	20266ES835	INSTALL LED SIGNAL- 4 SECTION	16.00	EACH
0845	20390NS835	INSTALL COORDINATING UNIT	4.00	EACH
0850	21543EN	BORE AND JACK CONDUIT	90.00	LF
0855	21743NN	INSTALL PEDESTRIAN DETECTOR	2.00	EACH
0860	23157EN	TRAFFIC SIGNAL POLE BASE	75.00	CUYD
0865	23235EC	INSTALL PEDESTAL POST	2.00	EACH
0870	24900EC	PVC CONDUIT-1 1/4 IN-SCHEDULE 80	1,185.00	LF
0875	24901EC	PVC CONDUIT-2 IN-SCHEDULE 80	780.00	LF
0880	14003	W CAP EXISTING MAIN	7.00	EACH
0885	14008	W ENCASEMENT STEEL BORED RANGE 3	140.00	LF
0890	14009	W ENCASEMENT STEEL BORED RANGE 4	390.00	LF
0895	14011	W ENCASEMENT STEEL BORED RANGE 6	120.00	LF
0900	14014	W ENCASEMENT STEEL OPEN CUT RANGE 3	90.00	LF
0905	14015	W ENCASEMENT STEEL OPEN CUT RANGE 4	60.00	LF
0910	14019	W FIRE HYDRANT ASSEMBLY	2.00	EACH
0915	14030	W METER RELOCATE	3.00	EACH
0920	14056	W PIPE PVC 02 INCH	40.00	LF
0925	14060	W PIPE PVC 08 INCH	2,040.00	LF
0930	14061	W PIPE PVC 10 INCH	685.00	LF
0935	14089	W TAPPING SLEEVE AND VALVE SIZE 1	1.00	EACH
0940	14090	W TAPPING SLEEVE AND VALVE SIZE 2	3.00	EACH
0945	14091	W TIE-IN 02 INCH	4.00	EACH
0950	14095	W TIE-IN 08 INCH	4.00	EACH

MATERIAL SUMMARY

Project Line No	Bid Code	DESCRIPTION	Quantity	Unit
0955	14102	W VALVE 02 INCH	4.00	EACH
0960	14105	W VALVE 06 INCH	1.00	EACH
0965	14106	W VALVE 08 INCH	3.00	EACH
0970	14109	W VALVE 16 INCH	2.00	EACH
0975	14124	W VALVE SPECIAL	1.00	EACH
0980	14126	W ENCASEMENT SPECIAL	470.00	LF
0985	02568	MOBILIZATION	1.00	LS
0990	02569	DEMOBILIZATION	1.00	LS
0995	14036	W PIPE DUCTILE IRON 06 INCH - (ADDED: 6-20-18)	1,415.00	LF
1000	14040	W PIPE DUCTILE IRON 16 INCH - (ADDED: 6-20-18)	700.00	LF

CONTRACT ID: 181219

121GR18D019-NHPP

DE06300251819

CUMBERLAND GAP PARKWAY (US 25E) IN LAUREL COUNTY MAOR WIDENING - ADDRESS SAFETY AND CAPACITY ON US 25E FROM KNOX/LAUREL COUNTY LINE INTO LAUREL COUNTY. IMPROVE SAFETY ALONG CORRIDOR BY PROVIDING IMPROVED ACCESS MANAGEMENT ASPHALT SURFACE WITH GRADE &

Project Line No	Bid Code	DESCRIPTION	Quantity	Unit
1005	00003	CRUSHED STONE BASE	5,049.00	TON
1010	00020	TRAFFIC BOUND BASE	50.00	TON
1015	00100	ASPHALT SEAL AGGREGATE	27.00	TON
1020	00103	ASPHALT SEAL COAT	3.00	TON
1025	00190	LEVELING & WEDGING PG64-22	624.00	TON
1030	00214	CL3 ASPH BASE 1.00D PG64-22	2,420.00	TON
1035	00216	CL3 ASPH BASE 1.00D PG76-22	2,898.00	TON
1040	00336	CL3 ASPH SURF 0.38A PG76-22	788.00	TON
1045	00339	CL3 ASPH SURF 0.38D PG64-22	651.00	TON
1050	00356	ASPHALT MATERIAL FOR TACK	16.10	TON
1055	20071EC	JOINT ADHESIVE	6,304.00	LF
1060	24904EC	CL3 ASPH BASE CK PG64-22	680.00	TON
1065	00078	CRUSHED AGGREGATE SIZE NO 2	996.00	TON
1070	01810	STANDARD CURB AND GUTTER	900.00	LF
1075	01875	STANDARD HEADER CURB	820.00	LF
1080	01949	MOUNTABLE MEDIAN TYPE 6A	162.00	SQYD
1085	01982	DELINEATOR FOR GUARDRAIL MONO DIRECTIONAL WHITE	20.00	EACH
1090	01987	DELINEATOR FOR GUARDRAIL BI DIRECTIONAL WHITE	7.00	EACH
1095	02014	BARRICADE-TYPE III	1.00	EACH
1100	02091	REMOVE PAVEMENT	80.00	SQYD
1105	02159	TEMP DITCH	788.00	LF
1110	02160	CLEAN TEMP DITCH	394.00	LF
1115	02200	ROADWAY EXCAVATION	498.00	CUYD
1120	02230	EMBANKMENT IN PLACE	1,789.00	CUYD
1125	02242	WATER - (FOR DUST CONTROL)	20.00	MGAL
1130	02351	GUARDRAIL-STEEL W BEAM-S FACE	1,400.70	LF
1135	02360	GUARDRAIL TERMINAL SECTION NO 1	3.00	EACH
1140	02367	GUARDRAIL END TREATMENT TYPE 1	1.00	EACH
1145	02369	GUARDRAIL END TREATMENT TYPE 2A	2.00	EACH

MATERIAL SUMMARY

Project Line No	Bid Code	DESCRIPTION	Quantity	Unit
1150	02381	REMOVE GUARDRAIL	812.50	LF
1155	02429	RIGHT-OF-WAY MONUMENT TYPE 1	7.00	EACH
1160	02430	RIGHT-OF-WAY MONUMENT TYPE 1A	12.00	EACH
1165	02432	WITNESS POST	1.00	EACH
1170	02483	CHANNEL LINING CLASS II	250.00	TON
1175	02484	CHANNEL LINING CLASS III	350.00	TON
1180	02545	CLEARING AND GRUBBING - (APPROXIMATELY 12 ACRES; LAUREL COUNTY)	1.00	LS
1185	02562	TEMPORARY SIGNS	72.00	SQFT
1190	02585	EDGE KEY	18.00	LF
1195	02596	FABRIC-GEOTEXTILE TYPE I	516.00	SQYD
1200	02599	FABRIC-GEOTEXTILE TYPE IV	871.00	SQYD
1205	02650	MAINTAIN & CONTROL TRAFFIC - (LAUREL COUNTY)	1.00	LS
1210	02671	PORTABLE CHANGEABLE MESSAGE SIGN	1.00	EACH
1215	02676	MOBILIZATION FOR MILL & TEXT - (LAUREL COUNTY)	1.00	LS
1220	02677	ASPHALT PAVE MILLING & TEXTURING	183.00	TON
1225	02690	SAFELOADING	9.50	CUYD
1230	02701	TEMP SILT FENCE	788.00	LF
1235	02703	SILT TRAP TYPE A	13.00	EACH
1240	02704	SILT TRAP TYPE B	13.00	EACH
1245	02705	SILT TRAP TYPE C	13.00	EACH
1250	02706	CLEAN SILT TRAP TYPE A	13.00	EACH
1255	02707	CLEAN SILT TRAP TYPE B	13.00	EACH
1260	02708	CLEAN SILT TRAP TYPE C	13.00	EACH
1265	02726	STAKING - (LAUREL COUNTY)	1.00	LS
1270	05950	EROSION CONTROL BLANKET	2,971.00	SQYD
1275	05952	TEMP MULCH	31,460.00	SQYD
1280	05953	TEMP SEEDING AND PROTECTION	42,156.00	SQYD
1285	05963	INITIAL FERTILIZER	.41	TON
1290	05964	20-10-10 FERTILIZER	.68	TON
1295	05985	SEEDING AND PROTECTION	12,453.00	SQYD
1300	05990	SODDING	733.00	SQYD
1305	05992	AGRICULTURAL LIMESTONE	8.20	TON
1310	05997	TOPSOIL FURNISHED AND PLACED	339.00	CUYD
1315	06510	PAVE STRIPING-TEMP PAINT-4 IN	5,780.00	LF
1320	06514	PAVE STRIPING-PERM PAINT-4 IN	6,750.00	LF
1325	06568	PAVE MARKING-THERMO STOP BAR-24IN	70.00	LF
1330	06570	PAVE MARKING-PAINT CROSS-HATCH	60.00	SQFT
1335	06574	PAVE MARKING-THERMO CURV ARROW	11.00	EACH
1340	06575	PAVE MARKING-THERMO COMB ARROW	1.00	EACH
1345	06600	REMOVE PAVEMENT MARKER TYPE V	12.00	EACH
1350	10020NS	FUEL ADJUSTMENT	14,381.00	DOLL
1355	10030NS	ASPHALT ADJUSTMENT	31,515.00	DOLL
1360	20191ED	OBJECT MARKER TY 3	1.00	EACH
1365	20362ES403	SHOULDER RUMBLE STRIPS-SAWED	5,782.00	LF
1370	20550ND	SAWCUT PAVEMENT	1,043.00	LF
1375	21289ED	LONGITUDINAL EDGE KEY	1,197.00	LF
1380	22861EN	HIGH STRENGTH GEOTEXTILE FABRIC TY V	871.00	SQYD
1385	23274EN11F	TURF REINFORCEMENT MAT 1	519.00	SQYD
1390	24889EC	PAVE MARKING-THERMO U-TURN	2.00	EACH

MATERIAL SUMMARY

Project Line No	Bid Code	DESCRIPTION	Quantity	Unit
1395	00462	CULVERT PIPE-18 IN	77.00	LF
1400	00464	CULVERT PIPE-24 IN	73.00	LF
1405	00521	STORM SEWER PIPE-15 IN	297.00	LF
1410	00522	STORM SEWER PIPE-18 IN	581.00	LF
1415	00524	STORM SEWER PIPE-24 IN	13.00	LF
1420	00526	STORM SEWER PIPE-30 IN	367.00	LF
1425	00528	STORM SEWER PIPE-36 IN	963.00	LF
1430	01204	PIPE CULVERT HEADWALL-18 IN	2.00	EACH
1435	01212	PIPE CULVERT HEADWALL-36 IN	1.00	EACH
1440	01433	SLOPED BOX OUTLET TYPE 1-18 IN	1.00	EACH
1445	01451	S & F BOX INLET-OUTLET-24 IN	1.00	EACH
1450	01505	DROP BOX INLET TYPE 5B	1.00	EACH
1455	01511	DROP BOX INLET TYPE 5D	1.00	EACH
1460	01517	DROP BOX INLET TYPE 5F	3.00	EACH
1465	01538	DROP BOX INLET TYPE 7	1.00	EACH
1470	01544	DROP BOX INLET TYPE 11	2.00	EACH
1475	01559	DROP BOX INLET TYPE 13G	5.00	EACH
1480	01767	MANHOLE TYPE C	3.00	EACH
1485	02600	FABRIC GEOTEXTILE TY IV FOR PIPE	10,220.00	SQYD
1490	24814EC	PIPELINE INSPECTION	2,371.00	LF
1495	02568	MOBILIZATION	1.00	LS
1500	02569	DEMOBILIZATION	1.00	LS

PROPOSAL BID ITEMS

181219

Page 1 of 6

Report Date 6/20/18

Section: 0001 - PAVING

LINE	BID CODE	ALT	DESCRIPTION	QUANTITY	UNIT	UNIT PRIC	FP	AMOUNT
0010	00003		CRUSHED STONE BASE	43,776.00	TON		\$	
0020	00020		TRAFFIC BOUND BASE	750.00	TON		\$	
0030	00100		ASPHALT SEAL AGGREGATE	293.00	TON		\$	
0040	00103		ASPHALT SEAL COAT	36.00	TON		\$	
0050	00190		LEVELING & WEDGING PG64-22	6,939.00	TON		\$	
0060	00214		CL3 ASPH BASE 1.00D PG64-22	14,916.00	TON		\$	
0070	00216		CL3 ASPH BASE 1.00D PG76-22	24,674.00	TON		\$	
0080	00336		CL3 ASPH SURF 0.38A PG76-22	7,349.00	TON		\$	
0090	00339		CL3 ASPH SURF 0.38D PG64-22	4,295.00	TON		\$	
0100	00356		ASPHALT MATERIAL FOR TACK	129.00	TON		\$	
0110	20071EC		JOINT ADHESIVE	47,724.00	LF		\$	
0120	24904EC		CL3 ASPH BASE CK PG64-22	7,143.00	TON		\$	

Section: 0002 - ROADWAY

LINE	BID CODE	ALT	DESCRIPTION	QUANTITY	UNIT	UNIT PRIC	FP	AMOUNT
0130	00078		CRUSHED AGGREGATE SIZE NO 2	9,962.00	TON		\$	
0140	01015		INSPECT & CERTIFY EDGE DRAIN SYSTEM (KNOX COUNTY)	1.00	LS		\$	
0150	01810		STANDARD CURB AND GUTTER	4,359.00	LF		\$	
0160	01875		STANDARD HEADER CURB	1,905.00	LF		\$	
0170	01904		REMOVE CURB	5.00	LF		\$	
0180	01949		MOUNTABLE MEDIAN TYPE 6A	1,791.00	SQYD		\$	
0190	01982		DELINEATOR FOR GUARDRAIL MONO DIRECTIONAL WHITE	115.00	EACH		\$	
0200	01987		DELINEATOR FOR GUARDRAIL BI DIRECTIONAL WHITE	54.00	EACH		\$	
0210	02014		BARRICADE-TYPE III	8.00	EACH		\$	
0220	02091		REMOVE PAVEMENT	841.00	SQYD		\$	
0230	02101		CEM CONC ENT PAVEMENT-8 IN	578.00	SQYD		\$	
0240	02159		TEMP DITCH	5,966.00	LF		\$	
0250	02160		CLEAN TEMP DITCH	2,983.00	LF		\$	
0260	02200		ROADWAY EXCAVATION	4,981.00	CUYD		\$	
0270	02223		GRANULAR EMBANKMENT	404.00	CUYD		\$	
0280	02230		EMBANKMENT IN PLACE	65,620.00	CUYD		\$	
0290	02242		WATER (FOR DUST CONTROL)	150.00	MGAL		\$	
0300	02351		GUARDRAIL-STEEL W BEAM-S FACE	11,055.20	LF		\$	
0310	02360		GUARDRAIL TERMINAL SECTION NO 1	23.00	EACH		\$	
0320	02367		GUARDRAIL END TREATMENT TYPE 1	7.00	EACH		\$	
0330	02369		GUARDRAIL END TREATMENT TYPE 2A	6.00	EACH		\$	
0340	02371		GUARDRAIL END TREATMENT TYPE 7	2.00	EACH		\$	
0350	02381		REMOVE GUARDRAIL	6,887.50	LF		\$	
0360	02391		GUARDRAIL END TREATMENT TYPE 4A	3.00	EACH		\$	
0370	02429		RIGHT-OF-WAY MONUMENT TYPE 1	80.00	EACH		\$	
0380	02430		RIGHT-OF-WAY MONUMENT TYPE 1A	27.00	EACH		\$	
0390	02432		WITNESS POST	3.00	EACH		\$	

PROPOSAL BID ITEMS

REVISED ADDENDUM #1: 6-20-18

181219

Page 2 of 6

Report Date 6/20/18

LINE	BID CODE	ALT	DESCRIPTION	QUANTITY	UNIT	UNIT PRIC	FP	AMOUNT
0400	02483		CHANNEL LINING CLASS II	1,727.00	TON		\$	
0410	02484		CHANNEL LINING CLASS III	1,166.00	TON		\$	
0420	02545		CLEARING AND GRUBBING (APPROXIMATELY 12 ACRES; LAUREL COUNTY)	1.00	LS		\$	
0430	02545		CLEARING AND GRUBBING (APPROXIMATELY 93 ACRES; KNOX COUNTY)	1.00	LS		\$	
0440	02555		CONCRETE-CLASS B	216.16	CUYD		\$	
0450	02562		TEMPORARY SIGNS	367.00	SQFT		\$	
0460	02585		EDGE KEY	267.00	LF		\$	
0470	02596		FABRIC-GEOTEXTILE TYPE I	3,441.00	SQYD		\$	
0480	02599		FABRIC-GEOTEXTILE TYPE IV	8,787.00	SQYD		\$	
0490	02611		HANDRAIL-TYPE A-1	388.00	LF		\$	
0500	02650		MAINTAIN & CONTROL TRAFFIC (KNOX COUNTY)	1.00	LS		\$	
0510	02650		MAINTAIN & CONTROL TRAFFIC (LAUREL COUNTY)	1.00	LS		\$	
0520	02671		PORTABLE CHANGEABLE MESSAGE SIGN	2.00	EACH		\$	
0530	02676		MOBILIZATION FOR MILL & TEXT (KNOX COUNTY)	1.00	LS		\$	
0540	02676		MOBILIZATION FOR MILL & TEXT (LAUREL COUNTY)	1.00	LS		\$	
0550	02677		ASPHALT PAVE MILLING & TEXTURING	249.00	TON		\$	
0560	02690		SAFELoading	33.90	CUYD		\$	
0570	02701		TEMP SILT FENCE	5,966.00	LF		\$	
0580	02703		SILT TRAP TYPE A	108.00	EACH		\$	
0590	02704		SILT TRAP TYPE B	108.00	EACH		\$	
0600	02705		SILT TRAP TYPE C	108.00	EACH		\$	
0610	02706		CLEAN SILT TRAP TYPE A	108.00	EACH		\$	
0620	02707		CLEAN SILT TRAP TYPE B	108.00	EACH		\$	
0630	02708		CLEAN SILT TRAP TYPE C	108.00	EACH		\$	
0640	02720		SIDEWALK-4 IN CONCRETE	387.00	SQYD		\$	
0650	02726		STAKING (KNOX COUNTY)	1.00	LS		\$	
0660	02726		STAKING (LAUREL COUNTY)	1.00	LS		\$	
0670	02731		REMOVE STRUCTURE (62-LF 5' X 4' RCBC; KNOX COUNTY)	1.00	LS		\$	
0680	05950		EROSION CONTROL BLANKET	24,783.00	SQYD		\$	
0690	05952		TEMP MULCH	261,360.00	SQYD		\$	
0700	05953		TEMP SEEDING AND PROTECTION	350,222.00	SQYD		\$	
0710	05963		INITIAL FERTILIZER	3.31	TON		\$	
0720	05964		20-10-10 FERTILIZER	5.52	TON		\$	
0730	05985		SEEDING AND PROTECTION	107,679.00	SQYD		\$	
0740	05990		SODDING	1,969.00	SQYD		\$	
0750	05992		AGRICULTURAL LIMESTONE	66.20	TON		\$	
0760	05997		TOPSOIL FURNISHED AND PLACED	2,706.00	CUYD		\$	
0770	06510		PAVE STRIPING-TEMP PAINT-4 IN	47,200.00	LF		\$	
0780	06514		PAVE STRIPING-PERM PAINT-4 IN	85,050.00	LF		\$	
0790	06566		PAVE MARKING-THERMO X-WALK-12 IN	650.00	LF		\$	
0800	06568		PAVE MARKING-THERMO STOP BAR-24IN	820.00	LF		\$	

PROPOSAL BID ITEMS

REVISED ADDENDUM #1: 6-20-18

181219

Page 3 of 6

Report Date 6/20/18

LINE	BID CODE	ALT	DESCRIPTION	QUANTITY	UNIT	UNIT PRIC	FP	AMOUNT
0810	06570		PAVE MARKING-PAINT CROSS-HATCH	685.00	SQFT		\$	
0820	06573		PAVE MARKING-THERMO STR ARROW	4.00	EACH		\$	
0830	06574		PAVE MARKING-THERMO CURV ARROW	123.00	EACH		\$	
0840	06575		PAVE MARKING-THERMO COMB ARROW	6.00	EACH		\$	
0850	06600		REMOVE PAVEMENT MARKER TYPE V	20.00	EACH		\$	
0860	08001		STRUCTURE EXCAVATION-COMMON	263.00	CUYD		\$	
0870	10020NS		FUEL ADJUSTMENT	128,029.00	DOLL	\$1.00	\$	\$128,029.00
0880	10030NS		ASPHALT ADJUSTMENT	255,359.00	DOLL	\$1.00	\$	\$255,359.00
0890	20191ED		OBJECT MARKER TY 3	7.00	EACH		\$	
0900	20362ES403		SHOULDER RUMBLE STRIPS-SAWED	47,200.00	LF		\$	
0910	20550ND		SAWCUT PAVEMENT	1,802.00	LF		\$	
0920	21289ED		LONGITUDINAL EDGE KEY	12,405.00	LF		\$	
0930	22861EN		HIGH STRENGTH GEOTEXTILE FABRIC TY V	8,787.00	SQYD		\$	
0940	23274EN11F		TURF REINFORCEMENT MAT 1	2,366.00	SQYD		\$	
0960	24889EC		PAVE MARKING-THERMO U-TURN	15.00	EACH		\$	

Section: 0003 - DRAINAGE

LINE	BID CODE	ALT	DESCRIPTION	QUANTITY	UNIT	UNIT PRIC	FP	AMOUNT
0970	00078		CRUSHED AGGREGATE SIZE NO 2	6.00	TON		\$	
0980	00440		ENTRANCE PIPE-15 IN	605.00	LF		\$	
0990	00441		ENTRANCE PIPE-18 IN	241.00	LF		\$	
1000	00443		ENTRANCE PIPE-24 IN	135.00	LF		\$	
1010	00461		CULVERT PIPE-15 IN	15.00	LF		\$	
1020	00462		CULVERT PIPE-18 IN	598.00	LF		\$	
1030	00464		CULVERT PIPE-24 IN	426.00	LF		\$	
1040	00466		CULVERT PIPE-30 IN	75.00	LF		\$	
1050	00468		CULVERT PIPE-36 IN	20.00	LF		\$	
1060	00472		CULVERT PIPE-60 IN	120.00	LF		\$	
1070	00521		STORM SEWER PIPE-15 IN	1,590.00	LF		\$	
1080	00522		STORM SEWER PIPE-18 IN	2,768.00	LF		\$	
1090	00524		STORM SEWER PIPE-24 IN	596.00	LF		\$	
1100	00526		STORM SEWER PIPE-30 IN	459.00	LF		\$	
1110	00528		STORM SEWER PIPE-36 IN	1,482.00	LF		\$	
1120	01000		PERFORATED PIPE-4 IN	2,035.00	LF		\$	
1130	01010		NON-PERFORATED PIPE-4 IN	180.00	LF		\$	
1140	01024		PERF PIPE HEADWALL TY 2-4 IN	1.00	EACH		\$	
1150	01028		PERF PIPE HEADWALL TY 3-4 IN	5.00	EACH		\$	
1160	01202		PIPE CULVERT HEADWALL-15 IN	1.00	EACH		\$	
1170	01204		PIPE CULVERT HEADWALL-18 IN	2.00	EACH		\$	
1180	01204		PIPE CULVERT HEADWALL-18 IN	10.00	EACH		\$	
1190	01208		PIPE CULVERT HEADWALL-24 IN	8.00	EACH		\$	
1200	01210		PIPE CULVERT HEADWALL-30 IN	1.00	EACH		\$	
1210	01212		PIPE CULVERT HEADWALL-36 IN	1.00	EACH		\$	
1220	01212		PIPE CULVERT HEADWALL-36 IN	3.00	EACH		\$	
1230	01220		PIPE CULVERT HEADWALL-60 IN	2.00	EACH		\$	
1240	01432		SLOPED BOX OUTLET TYPE 1-15 IN	4.00	EACH		\$	
1250	01433		SLOPED BOX OUTLET TYPE 1-18 IN	5.00	EACH		\$	

PROPOSAL BID ITEMS

181219

Report Date 6/20/18

LINE	BID CODE	ALT	DESCRIPTION	QUANTITY	UNIT	UNIT PRIC	FP	AMOUNT
1260	01450		S & F BOX INLET-OUTLET-18 IN	7.00	EACH		\$	
1270	01451		S & F BOX INLET-OUTLET-24 IN	5.00	EACH		\$	
1280	01452		S & F BOX INLET-OUTLET-30 IN	3.00	EACH		\$	
1290	01456		CURB BOX INLET TYPE A	10.00	EACH		\$	
1300	01480		CURB BOX INLET TYPE B	1.00	EACH		\$	
1310	01490		DROP BOX INLET TYPE 1	3.00	EACH		\$	
1320	01505		DROP BOX INLET TYPE 5B	6.00	EACH		\$	
1330	01508		DROP BOX INLET TYPE 5C	2.00	EACH		\$	
1340	01511		DROP BOX INLET TYPE 5D	2.00	EACH		\$	
1350	01517		DROP BOX INLET TYPE 5F	13.00	EACH		\$	
1360	01538		DROP BOX INLET TYPE 7	1.00	EACH		\$	
1370	01544		DROP BOX INLET TYPE 11	12.00	EACH		\$	
1380	01559		DROP BOX INLET TYPE 13G	11.00	EACH		\$	
1390	01650		JUNCTION BOX	1.00	EACH		\$	
1400	01740		CORED HOLE DRAINAGE BOX CON-4 IN	12.00	EACH		\$	
1410	01761		MANHOLE TYPE B	1.00	EACH		\$	
1420	01767		MANHOLE TYPE C	5.00	EACH		\$	
1430	02010		ADJUST MEDIAN BOX	6.00	EACH		\$	
1440	02600		FABRIC GEOTEXTILE TY IV FOR PIPE	30,696.00	SQYD	\$2.00	\$	\$61,392.00
1450	23952EC		DRAINAGE JUNCTION BOX TY B	1.00	EACH		\$	
1460	24814EC		PIPELINE INSPECTION	7,993.00	LF		\$	

Section: 0004 - SEWER

LINE	BID CODE	ALT	DESCRIPTION	QUANTITY	UNIT	UNIT PRIC	FP	AMOUNT
1470	15000		S BYPASS PUMPING	34.00	EACH		\$	
1480	15017		S ENCASMENT STEEL BORED RANGE 4	465.00	LF		\$	
1490	15023		S ENCASMENT STEEL OPEN CUT RANGE 4	225.00	LF		\$	
1500	15059		S FORCE MAIN PVC 04 INCH	80.00	LF		\$	
1510	15061		S FORCE MAIN PVC 08 INCH	1,710.00	LF		\$	
1520	15069		S FORCE MAIN TAP SLEEVE/VALVE RNG 1	6.00	EACH		\$	
1530	15073		S FORCE MAIN TIE-IN 04 INCH	1.00	EACH		\$	
1540	15086		S LATERAL CLEANOUT	1.00	EACH		\$	
1550	15088		S LATERAL LONG SIDE 06 INCH	1.00	EACH		\$	
1560	15092		S MANHOLE	27.00	EACH		\$	
1570	15093		S MANHOLE ABANDON/REMOVE	12.00	EACH		\$	
1580	15095		S MANHOLE CASTING STANDARD	27.00	EACH		\$	
1590	15112		S PIPE PVC 08 INCH	3,435.00	LF		\$	

Section: 0005 - SIGNALIZATION

LINE	BID CODE	ALT	DESCRIPTION	QUANTITY	UNIT	UNIT PRIC	FP	AMOUNT
1600	04792		CONDUIT-1 IN	105.00	LF		\$	
1610	04795		CONDUIT-2 IN	90.00	LF		\$	
1620	04811		ELECTRICAL JUNCTION BOX TYPE B	23.00	EACH		\$	
1630	04820		TRENCHING AND BACKFILLING	1,430.00	LF		\$	
1640	04821		OPEN CUT ROADWAY	90.00	LF		\$	

PROPOSAL BID ITEMS

REVISED ADDENDUM #1: 6-20-18

181219

Page 5 of 6

Report Date 6/20/18

LINE	BID CODE	ALT	DESCRIPTION	QUANTITY	UNIT	UNIT PRIC	FP	AMOUNT
1650	04830		LOOP WIRE	10,615.00	LF		\$	
1660	04844		CABLE-NO. 14/5C	5,175.00	LF		\$	
1670	04850		CABLE-NO. 14/1 PAIR	11,950.00	LF		\$	
1680	04885		MESSENGER-10800 LB	1,905.00	LF		\$	
1690	04895		LOOP SAW SLOT AND FILL	3,895.00	LF		\$	
1700	04931		INSTALL CONTROLLER TYPE 170	4.00	EACH		\$	
1710	04932		INSTALL STEEL STRAIN POLE	16.00	EACH		\$	
1720	20093NS835		INSTALL PEDESTRIAN HEAD-LED	2.00	EACH		\$	
1730	20094ES835		TEMP RELOCATION OF SIGNAL HEAD	37.00	EACH		\$	
1740	20188NS835		INSTALL LED SIGNAL-3 SECTION	22.00	EACH		\$	
1750	20266ES835		INSTALL LED SIGNAL- 4 SECTION	16.00	EACH		\$	
1760	20390NS835		INSTALL COORDINATING UNIT	4.00	EACH		\$	
1770	21543EN		BORE AND JACK CONDUIT	90.00	LF		\$	
1780	21743NN		INSTALL PEDESTRIAN DETECTOR	2.00	EACH		\$	
1790	23157EN		TRAFFIC SIGNAL POLE BASE	75.00	CUYD		\$	
1800	23235EC		INSTALL PEDESTAL POST	2.00	EACH		\$	
1810	24900EC		PVC CONDUIT-1 1/4 IN-SCHEDULE 80	1,185.00	LF		\$	
1820	24901EC		PVC CONDUIT-2 IN-SCHEDULE 80	780.00	LF		\$	
1830	24955ED		REMOVE SIGNAL EQUIPMENT	5.00	EACH		\$	

Section: 0006 - WATERLINE

LINE	BID CODE	ALT	DESCRIPTION	QUANTITY	UNIT	UNIT PRIC	FP	AMOUNT
1840	14003		W CAP EXISTING MAIN	7.00	EACH		\$	
1850	14008		W ENCASEMENT STEEL BORED RANGE 3	140.00	LF		\$	
1860	14009		W ENCASEMENT STEEL BORED RANGE 4	390.00	LF		\$	
1870	14011		W ENCASEMENT STEEL BORED RANGE 6	120.00	LF		\$	
1880	14014		W ENCASEMENT STEEL OPEN CUT RANGE 3	90.00	LF		\$	
1890	14015		W ENCASEMENT STEEL OPEN CUT RANGE 4	60.00	LF		\$	
1900	14019		W FIRE HYDRANT ASSEMBLY	2.00	EACH		\$	
1910	14030		W METER RELOCATE	3.00	EACH		\$	
1915	14036		W PIPE DUCTILE IRON 06 INCH (ADDED: 6-20-18)	1,415.00	LF		\$	
1917	14040		W PIPE DUCTILE IRON 16 INCH (ADDED: 6-20-18)	700.00	LF		\$	
1920	14056		W PIPE PVC 02 INCH	40.00	LF		\$	
1940	14060		W PIPE PVC 08 INCH	2,040.00	LF		\$	
1950	14061		W PIPE PVC 10 INCH	685.00	LF		\$	
1970	14089		W TAPPING SLEEVE AND VALVE SIZE 1	1.00	EACH		\$	
1980	14090		W TAPPING SLEEVE AND VALVE SIZE 2	3.00	EACH		\$	
1990	14091		W TIE-IN 02 INCH	4.00	EACH		\$	
2000	14095		W TIE-IN 08 INCH	4.00	EACH		\$	
2010	14102		W VALVE 02 INCH	4.00	EACH		\$	
2020	14105		W VALVE 06 INCH	1.00	EACH		\$	
2030	14106		W VALVE 08 INCH	3.00	EACH		\$	
2040	14109		W VALVE 16 INCH	2.00	EACH		\$	
2050	14124		W VALVE SPECIAL	1.00	EACH		\$	
2060	14126		W ENCASEMENT SPECIAL	470.00	LF		\$	

181219

PROPOSAL BID ITEMS

Page 6 of 6

Report Date 6/20/18

Section: 0007 - DEMOBILIZATION &/OR MOBILIZATION

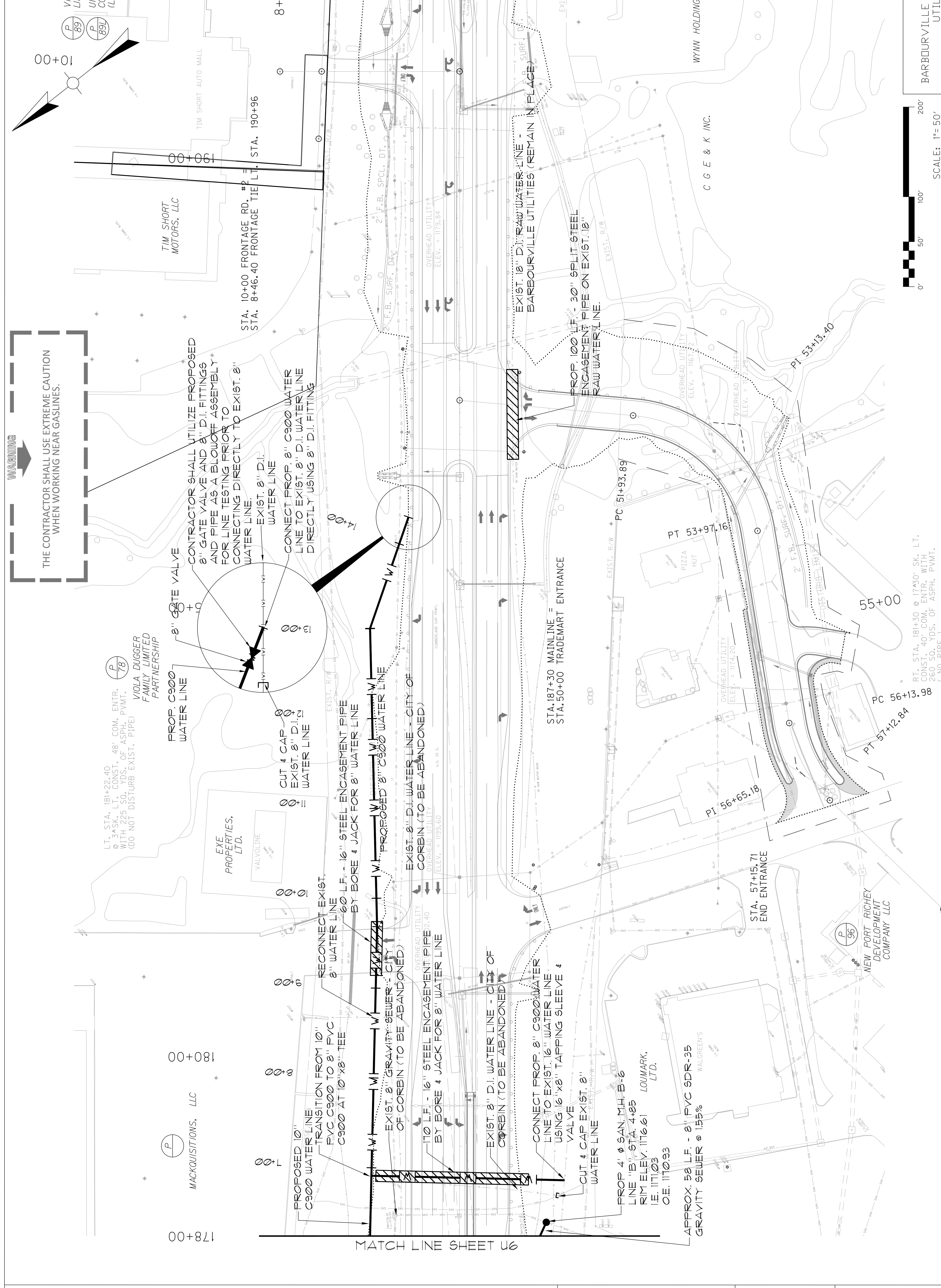
LINE	BID CODE	ALT	DESCRIPTION	QUANTITY	UNIT	UNIT PRIC	FP	AMOUNT
2070	02568		MOBILIZATION	1.00	LS		\$	
2080	02569		DEMOBILIZATION	1.00	LS		\$	

UTILITY SUMMARY

COUNTY OF	ITEM NO.	SHEET NO.
KNOX	11-188.00	UI

ITEM	DESCRIPTION	UNIT	SHEET U-2	SHEET U-3	SHEET U-4	SHEET U-5	SHEET U-6	SHEET U-7	SHEET U-8	SHEET U-9	SHEET U-10	SHEET U-11	SHEET U-12	SHEET U-13	SHEET U-14	SHEET U-15	SHEET U-16	SHEET U-17	TOTALS PROJECT
BARBOURVILLE RAW WATER LINE SUMMARY																			
14126	W ENCASEMENT SPECIAL	LF	140	100		80		100	50										470
CORBIN WATER LINE SUMMARY																			
14003	W CAP EXISTING MAIN	EA						2	2				1	40	1	1			7
14008	W ENCASEMENT STEEL BORED RANGE 3	LF													100				140
14009	W ENCASEMENT STEEL BORED RANGE 4	LF				100	230	60											390
14011	W ENCASEMENT STEEL BORED RANGE 6	LF												90	30	90			120
14014	W ENCASEMENT STEEL OPEN CUT RANGE 3	LF												90					90
14015	W ENCASEMENT STEEL OPEN CUT RANGE 4	LF							60										60
14019	W FIRE HYDRANT ASSEMBLY	EA				1							1		1				2
14030	W METER RELOCATE	EA				1			1				1						3
14036	W PIPE DUCTILE IRON 06 INCH	LF											300	640	475				1415
14040	W PIPE DUCTILE IRON 16 INCH	LF											20	20	240	460			700
14056	W PIPE PVC 02 INCH	LF											20	20					40
14060	W PIPE PVC 08 INCH	LF					930	1110											2040
14061	W PIPE PVC 10 INCH	LF				625	60												685
14089	W TAPPING SLEEVE AND VALVE SIZE 1	EA											1						1
14090	W TAPPING SLEEVE AND VALVE SIZE 2	EA						1					2	2	1	1			3
14091	W TIE-IN 02 INCH	EA																	4
14095	W TIE-IN 08 INCH	EA						2	2										4
14102	W VALVE 02 INCH	EA											2	2					4
14105	W VALVE 06 INCH	EA											2	2					4
14106	W VALVE 08 INCH	EA						1	2						1				1
14109	W VALVE 16 INCH	EA													2				3
14124	W VALVE SPECIAL	EA													2	1			2
CORBIN SEWER LINE SUMMARY																			
15000	S BYPASS PUMPING	EA						1					2	2	2				1
15017	S ENCASEMENT STEEL BORED RANGE 4	LF				220	200						4	4	2		45		34
15023	S ENCASEMENT STEEL OPEN CUT RANGE 4	LF									80						145		465
15059	S FORCE MAIN PVC 04 INCH	LF				80													225
15061	S FORCE MAIN PVC 08 INCH	LF															1400	70	80
15069	S FORCE MAIN TAP SLEEVE/VALVE RANGE 1	EA									240						4		1710
15073	S FORCE MAIN TIN-IE 04 INCH	EA				1					2								6
15086	S LATERAL CLEANOUT	EA																	1
15088	S LATERAL SHORTSIDE 06 INCH	EA																	1
15092	S MANHOLE	EA											4	2	2				27
15093	S MANHOLE ABANDON/REMOVE	EA											2	2	2				12
15095	S MANHOLE CASTING STANDARD	EA											4	2	2				27
15112	S PIPE PVC 08 INCH	LF				325	410	470		320	385		485	585	320			135	3435

COUNTY OF	ITEM NO.	SHEET NO.
KNOX	11-188.00	U7



WARNING

THE CONTRACTOR SHALL USE EXTREME CAUTION WHEN WORKING NEAR GASLINES.

LT. STA. 181+22.40 @ 3" ASK. LT. CONST. 48' COM. ENTR. WITH 225 SQ. YDS. OF ASPH. PAVT. (DO NOT DISTURB EXIST. PIPE)

VIOLA DUGGER FAMILY LIMITED PARTNERSHIP

CONTRACTOR SHALL UTILIZE PROPOSED 8" GATE VALVE AND 8" D.I. FITTINGS AND PIPE AS A BLOWOFF ASSEMBLY FOR LINE TESTING PRIOR TO CONNECTING DIRECTLY TO EXIST. 8" WATER LINE.

CONNECT PROP. 8" C900 WATER LINE TO EXIST. 8" D.I. WATER LINE DIRECTLY USING 8" D.I. FITTING

RECONNECT EXIST. 8" WATER LINE BY BORE & JACK FOR 8" WATER LINE

PROPOSED 8" C900 WATER LINE

EXIST. 8" D.I. WATER LINE - CITY OF CORBIN (TO BE ABANDONED)

CONNECT PROP. 8" C900 WATER LINE TO EXIST. 16" WATER LINE USING 16"x8" TAPPING SLEEVE & VALVE

CUT & CAP EXIST. 8" WATER LINE

PROP. 4" Ø SAN. M.H. B-6 LINE "B" - STA. 4+85 RIM ELEV. 1176.61 LOU MARK, LTD. O.E. 1170.93

APPROX. 58 L.F. - 8" PVC SDR-35 GRAVITY SEWER @ 1.55%

EXIST. 18" D.I. RAW WATER LINE - BARBOURVILLE UTILITIES (REMAIN IN PLACE)

PROP. 100 L.F. - 30" SPLIT STEEL ENGAGEMENT PIPE ON EXIST. 18" RAW WATER LINE.

STA. 187+30 MAINLINE = STA. 50+00 TRADEMART ENTRANCE

STA. 57+15.71 END ENTRANCE

STA. 190+96 MAINLINE = STA. 10+00 FRONTAGE TIE

VIOLA DUGGER FAMILY LIMITED PARTNERSHIP
UNION NATIONAL BANK AND TRUST COMPANY OF BARBOURVILLE, KENTUCKY (LESSEE)

MACACQUISITIONS, LLC

EXE PROPERTIES, LTD.

TIM SHORT MOTORS, LLC

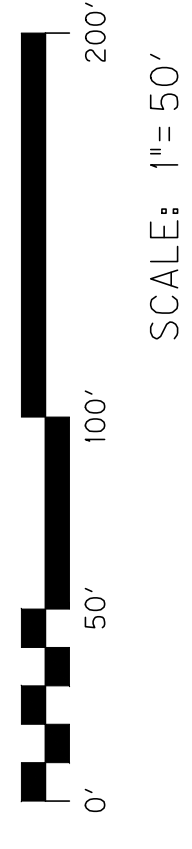
TIM SHORT AUTO MALL

WYNN HOLDINGS, LLC

C G E & K INC.

NEW PORT RICHEY DEVELOPMENT COMPANY LLC

RT. STA. 181+30 @ 17+30' SK. LT. CONST. 40' COM. ENTR. WITH 260 SQ. YDS. OF ASPH. PAVT. (NO PIPE)



US 25 E
BARBOURVILLE UTILITIES/CITY OF CORBIN
UTILITY RELOCATION

MATCH LINE SHEET U9

MATCH LINE SHEET U8

178+00

180+00

190+00

192+00

194+00

196+00

198+00

200+00

